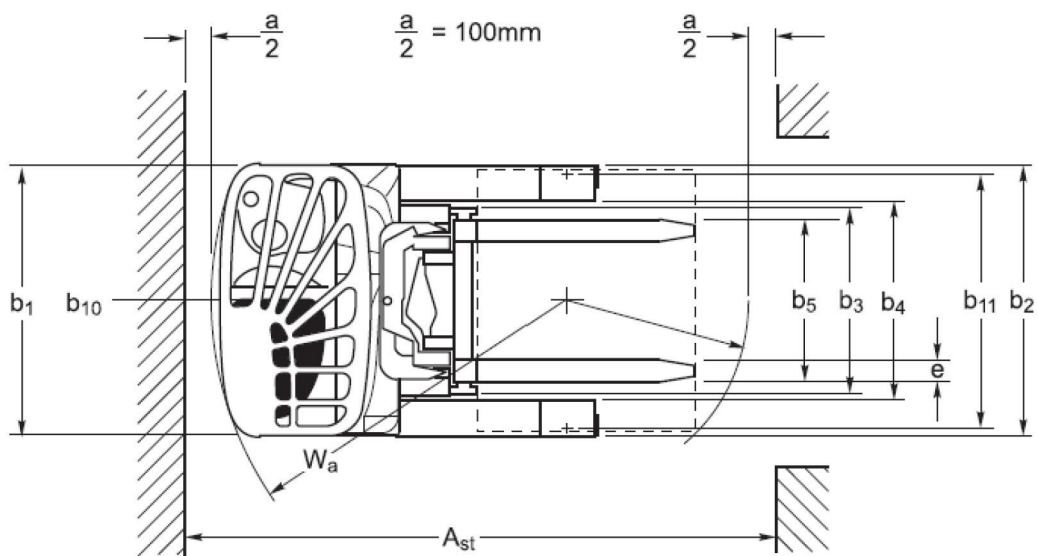
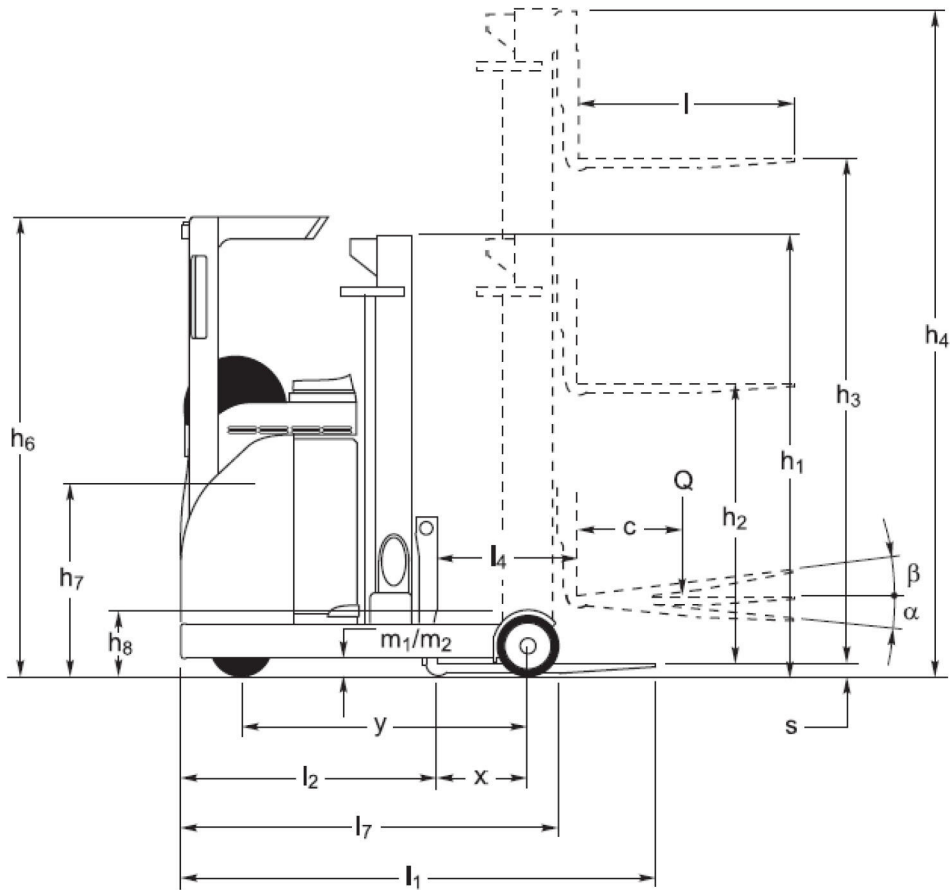


# Baoli

## KBR 14-20



1.1	Manufacturer		KION BAOLI	KION BAOLI
1.2	Manufacturer's type designation		KBR 14	KBR 20
1.3	Drive: electric, diesel, petrol, fuel gas		Electric	Electric
1.4	Operator type: hand, pedestrian, standing, seated, order-picker		Seated	Seated
1.5	Rated capacity / Rated load	Q (t)	1.4	2
1.6	Load centre distance	c (mm)	600	600
1.8	Load distance, centre of drive axle to fork	x (mm)	239	475
1.9	Wheelbase	y (mm)	1275	1520
2.1	Service weight	Kg	3060	3835
2.3	Axle loading, unladen front/rear	Kg	1785/1275	2100/1220
2.4	Axle loading, fork advanced, laden front/rear	Kg	550/3910	440/4880
2.5	Axle loading, fork retracted, laden front/rear	Kg	1345/3115	1860/3460
3.1	Tyres: solid rubber, superelastic, pneumatic, polyurethane		PU	PU
3.2	Tyre size, front		Ø343x135	Ø343x135
3.3	Tyre size, rear		Ø285x100	Ø350x100
3.5	Wheels, number front/rear (x = driven wheels)		1x/2	1x/2
3.7	Tread, rear	b11 (mm)	1150	1150
4.1	Tilt of mast/fork carriage forward/backward	$\alpha/\beta$ (°)	2,0/4,0	2,0/4,0
4.2	Height, mast lowered	h1 (mm)	2476	2930
4.3	Free lift	h2 (mm)	1627	1627
4.4	Lift	h3 (mm)	5755	6355
4.5	Height, mast extended	h4 (mm)	6495	7139
4.7	Height of overhead guard (cabin)	h6 (mm)	2110	2110
4.8	Seat height/stand height	h7 (mm)	985	985
4.10	Height of wheel arms	h8 (mm)	310	373
4.19	Overall length	l1 (mm)	2407	2411
4.20	Length to face of forks	l2 (mm)	1257	1261
4.21	Overall width	b1/b2 (mm)	1234 / 1250	1234 / 1250
4.22	Fork dimensions ISO 2331	s/e/l (mm)	100x45x1150	100x45x1150
4.23	Fork carriage ISO 2328, class/type A, B		2A	2A
4.24	Fork carriage width	b3 (mm)	830	830
4.25	Distance between fork-arms	b5 (mm)	296/690	316/710
4.26	Distance between wheel arms/loading surfaces	b4 (mm)	922	922
4.28	Reach distance	l4 (mm)	412	675
4.31	Ground clearance, laden, below mast	m1 (mm)	75	75
4.32	Ground clearance, centre of wheelbase	m2 (mm)	75	75
4.34.1	Aisle width for pallets 1000 x 1200 crossways	Ast (mm)	2709	2772
4.34.2	Aisle width for pallets 800 x 1200 lengthways	Ast (mm)	2781	2803
4.35	Turning radius	Wa (mm)	1540	1775
4.37	Length across wheel arms	l7 (mm)	1638	1911
5.1	Travel speed, laden/unladen	km/h	10	13.5
5.2	Lift speed, laden/unladen	m/s	0,44/0,66	0,36/0,53
5.3	Lowering speed, laden/unladen	m/s	0,55/0,44	0,55/0,44
5.4	Reaching speed, laden/unladen	m/s	0,12/0,12	0,12/0,12
5.7	Gradeability, laden/unladen	%	4,5/8,2	3,9/7,1
5.8	Max gradeability, laden/unladen	%	10/10	10/10
6.1	Drive motor rating S2 60 min	kW	6.5	6.5
6.2	Lift motor rating at S3 15%	kW	11.5	11.5
6.3	Battery according to DIN 43531/35/36 A, B, C, no		43531C	43531C
6.4	Battery voltage/nominal capacity K5	V/Ah	48/465	48/700
6.5	Battery weight	kg	939	939
6.6	Energy consumption according to VDI cycle	kWh/h	3.13	3.57
10.1	Operating pressure for attachments	bar	200	200
10.2	Oil volume for attachments	l/min	6.5	6.5
10.7	Sound pressure level at driver's seat	dB (A)	64	64



**KBR 14**

Mast type	H3	Capacity - Load center 600 mm	H1	H4	H2	Tilting angle Front/back
VFHM triplex	5755	1400	2476	6495	1627	2/4
	6255	1400	2910	6995	2061	2/4
	6955	1400	2910	7695	2061	2/4
	7255	1400	3376	8295	2527	2/4
	7555	1350	3376	8295	2527	2/4
	8255	1150	3376	8995	2527	2/4
	8555	900	3910	9295	3061	2/4

**KBR 20**

Mast type	H3	Capacity - Load center 600 mm	H1	H4	H2	Tilting angle Front/back
VFHM triplex	6355	1946	2930	7139	2081	2/4
	7255	1871	3430	8039	2581	2/4
	8255	1776	3430	9039	2581	2/4
	9455	1460	3930	10239	3081	2/4
	9655	1410	3930	10439	3081	2/4
	10155	1280	4430	10939	3581	2/4
	10455	1220	4430	11239	3581	2/4
	10655	1180	4430	11439	3581	2/4

# KBR 14-20



The KBR 14-20 series provides a versatile selection to meet various load capacities and operational requirements. The line-up comprises the KBR 14, with a load capacity of 1.400 kg, the KBR 16L with load capacity of 1.600 kg and lifting heights up to 9,4 meters. The series is completed by the KBR 16 and KBR 20, designed to handle loads of 1.600 kg and 2.000 kg respectively, with lifting heights up to 10,6 meters.

Engineered to meet to the needs of warehouses and distribution centres, the KBR 14-20 series achieves extended autonomy using 48-Volt batteries with a capacity of up to 700 Ah.

Safety and stability are ensured by a robust chassis. The availability of numerous options for warning devices and lights enhances overall safety.

Operator comfort and accessibility are central to the KBR's design, featuring ergonomic controls and a user-centric cab layout. The mast and overhead guard design, along with the

integrated side shifter, ensures the operator's visibility of forks and loads for safe and efficient goods handling. Hydraulic functions are operated by mini levers, and the compact electric steering control enhances maneuverability. The seat and steering console are fully adjustable to accommodate drivers of different sizes.

The steering system offers four options to adapt to various driver preferences: 180° / 360°, combined with standard / inverse steering. Additionally, the operator is supported by a height indicator and height selector, contributing to enhanced driver comfort and safe, efficient goods handling.

A state-of-the-art electronic controller governs all electric and hydraulic functions, ensuring safe and silent operations combined with energy efficiency.

## Technology:

- ✓ Fork carriage with integrated side shifter for efficient goods handling
- ✓ Battery options to suit every type of application: 48-volt batteries with capacities ranging from 465 Ah to 700 Ah
- ✓ Drive and lift motors with AC technology ensure maintenance-free operations
- ✓ Wide range of warning devices and lights available for enhanced safety

## Ergonomics and Workplace:

- ✓ Ergonomic driver compartment with an adjustable seat and steering console position.
- ✓ Color screen display for quick access to key information on the truck's status.
- ✓ The design of the mast and overhead guard ensures visibility of forks and load.
- ✓ Electronic forward/reverse switch for fast and easy inversion of the driving direction
- ✓ Hydraulic mini levers easy and intuitive to operate
- ✓ Electric steering system that adapts to various driver preferences.
- ✓ Height indicator and selector for enhanced driver comfort, safer, and faster goods handling.

