

Baoli

KBE 18-20Li



Baoli

1.1	Manufacturer		KION BAOLI	KION BAOLI
1.2	Manufacturer's type designation		KBE 18Li G1	KBE 20Li G1
1.3	Drive: electric, diesel, petrol, fuel gas		Electric	Electric
1.4	Operator type: hand, pedestrian, standing, seated, order-picker		Seated	Seated
1.5	Rated capacity / Rated load	Q (t)	1.8	2,0
1.6	Load centre distance	c (mm)	500	500
1.8	Load distance, centre of drive axle to fork	x (mm)	425	425
1.9	Wheelbase	y (mm)	1405	1405
2.1	Service weight	Kg	3293	3431
2.2	Axle loading, laden front/rear	Kg	4429/653	4795/676
2.3	Axle loading, unladen front/rear	Kg	1447/1846	1414/2017
3.1	Tyres: solid rubber, superelastic, pneumatic, polyurethane		S/E	S/E
3.2	Tyre size, front		6,50-10	23X9-10
3.3	Tyre size, rear		5,00-8/3,50	5,00-8/3,50
3.5	Wheels, number front/rear (x = driven wheels)		2x/2	2x/2
3.6	Tread, front	b10 (mm)	930	975
3.7	Tread, rear	b11 (mm)	900	900
4.1	Tilt of mast/fork carriage forward/backward	α/β (°)	6/10	6/10
4.2	Height, mast lowered	h1 (mm)	2062	2062
4.3	Free lift	h2 (mm)	150	150
4.4	Lift	h3 (mm)	3000	3000
4.5	Height, mast extended	h4 (mm)	4040	4040
4.7	Height of overhead guard (cabin)	h6 (mm)	2150	2150
4.8	Seat height/stand height	h7 (mm)	1166	1169
4.12	Coupling height	h10 (mm)	639	639
4.19	Overall length	l1 (mm)	3354	3394
4.20	Length to face of forks	l2 (mm)	2154	2194
4.21	Overall width	b1/b2 (mm)	1120	1210
4.22	Fork dimensions ISO 2331	s/e/l (mm)	40x80x1200	40x80x1200
4.23	Fork carriage ISO 2328, class/type A, B		II A	II A
4.24	Fork carriage width	b3 (mm)	1040	1040
4.31	Ground clearance, laden, below mast	m1 (mm)	100	103
4.32	Ground clearance, centre of wheelbase	m2 (mm)	110	113
4.34.1	Aisle width for pallets 1000 x 1200 crossways	Ast (mm)	3495/3475	3595/3545
4.34.2	Aisle width for pallets 800 x 1200 lengthways	Ast (mm)	3695/3675	3795/3745
4.35	Turning radius	Wa (mm)	1870/1850	1970/1920
4.36	Internal turning radius	b13 (mm)	536	536
5.1	Travel speed, laden/unladen	km/h	15/15	15/15
5.2	Lift speed, laden/unladen	m/s	0,350/0,470	0,310/0,470
5.3	Lowering speed, laden/unladen	m/s	0,440/0,470	0,320/0,470
5.8	Max gradeability, laden/unladen	%	18/20	18/20
5.10	Service brake		Mech/Hydr	Mech/Hydr
6.1	Drive motor rating S2 60 min	kW	10,2/2x4,6	10,2/2x4,6
6.2	Lift motor rating at S3 15%	kW	11.5	11.5
6.4	Battery voltage/nominal capacity K5	V/Ah	76,8 / 150/228	76,8 / 150/228
6.5	Battery weight	kg	210	210
6.6	Energy consumption according to VDI cycle	kWh/h	4,6 / 4,1	4,7 / 4,5
10.1	Operating pressure for attachments	bar	170	185
10.7	Sound pressure level at driver's seat	dB (A)	66/68	66/68

KBE 18Li G1										
Mast type	H3	Capacity - Load center 500 mm	Capacity - Load center 500 mm - with IntegSideshift	Capacity - Load center 500 mm - with Hang on Sideshift	H1	H4 with load backrest	H4 without load backrest	H2 with load backrest	H2 without load backrest	Tilting angle Front/back
VM Tele	3000	1800	1800	1600	2068	4040	3651	150	150	6/7
	3300	1800	1800	1600	2218	4340	3951	150	150	6/7
	3500	1800	1800	1600	2318	4540	4151	150	150	6/7
	4000	1800	1760	1570	2568	5040	4651	150	150	6/7
	4500	1750	1390	1220	2818	5540	5151	150	150	6/7
	5000	1200	1050	900	3118	6040	5651	150	150	6/7
VFM 2 stage	3000	1800	1800	1600	2033	4040	3651	990	1254	6/7
	3300	1800	1800	1600	2183	4340	3951	1140	1404	6/7
	3500	1800	1800	1600	2283	4540	4151	1240	1504	6/7
	4000	1800	1760	1570	2533	5040	4651	1490	1754	6/7
VFHM triplex	4250	1680	1360	1160	2033	5290	4901	990	1348	6/7
	4550	1560	1180	980	2133	5590	5201	1090	1448	6/7
	4700	1500	1120	930	2183	5740	5351	1140	1498	6/7
	4850	1440	1060	880	2233	5890	5501	1190	1548	6/7
	5000	1380	1010	820	2283	6040	5651	1240	1598	6/7
	5500	1180	810	640	2533	6540	6151	1490	1848	6/7
	6000	980	620	500	2783	7040	6651	1740	2098	6/7
	6500	800	450	300	3033	7540	7151	1990	2385	6/7

KBE 20Li G1										
Mast type	H3	Capacity - Load center 500 mm	Capacity - Load center 500 mm - with IntegSideshift	Capacity - Load center 500 mm - with Hang on Sideshift	H1	H4 with load backrest	H4 without load backrest	H2 with load backrest	H2 without load backrest	Tilting angle Front/back
VM Tele	3000	2000	2000	1750	2076	4040	3511	150	150	6/7
	3300	2000	2000	1750	2226	4340	3811	150	150	6/7
	3500	2000	2000	1750	2326	4540	4011	150	150	6/7
	4000	2000	1820	1590	2576	5040	4511	150	150	6/7
	4500	1700	1470	1280	2826	5540	5011	150	150	6/7
	5000	1300	1150	1000	3126	6040	5511	150	150	6/7
VFM 2 stage	3000	2000	2000	1750	2041	4040	3651	990	1254	6/7
	3300	2000	2000	1750	2191	4340	3951	1140	1404	6/7
	3500	2000	2000	1750	2291	4540	4151	1240	1504	6/7
	4000	2000	1820	1590	2541	5040	4651	1490	1754	6/7
VFHM triplex	4250	1860	1660	1430	2041	5290	4901	990	1348	6/7
	4550	1720	1520	1290	2141	5590	5201	1090	1448	6/7
	4700	1650	1440	1230	2191	5740	5351	1140	1498	6/7
	4850	1580	1370	1160	2241	5890	5501	1190	1548	6/7
	5000	1520	1300	1100	2291	6040	5651	1240	1598	6/7
	5500	1290	1060	870	2541	6540	6151	1490	1848	6/7
	6000	1060	820	650	2791	7040	6651	1740	2098	6/7
	6500	850	600	450	3041	7540	7151	1990	2385	6/7

KBE 18-20Li



The KBE 18Li and KBE 20Li, with a load capacity of 1,8 to 2,0 tons and a maximum lifting height of 6,5 meters, are ideal for logistics and industries, especially in indoor spaces, thanks to their zero emissions and low noise levels. These trucks excel in light to medium-duty operations, featuring a compact design for easy handling in narrow spaces.

KBE 18Li and KBE 20Li models feature lithium-ion batteries, offering numerous advantages; they allow short interim charges, ensuring increased truck availability, are virtually maintenance-free, and eliminate the risk of hazardous gases during charging.

AC technology motors ensure maintenance-free operation. Thanks to more powerful motors, the KBE 18-20Li achieves higher travel speeds and easily overcomes steeper ramps.

Additionally, the KBE 18-20Li offers a remarkable improvement in energy consumption compared to previous models, also showcasing a commitment to sustainability.

The trucks are equipped with wet brakes, offering the main advantage of significantly lower maintenance requirements compared to trucks with drum brakes.

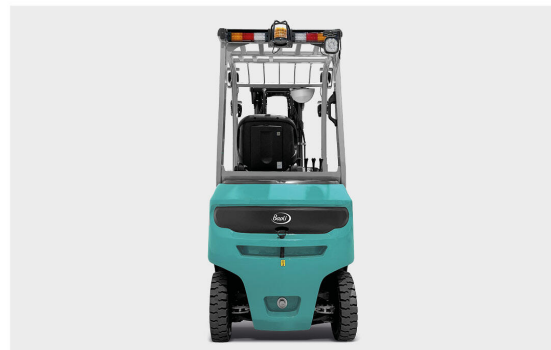
The cabin has been designed with a focus on safety and comfort. A metal grid step and a large handle ensure safe entry and exit from the driver's compartment. The operator benefits from two storage compartments, along with two USB ports for charging small electronic devices.

The electronic forward/reverse switch allows for fast and easy changes in driving direction, enhancing maneuverability. The rear handhold with an integrated horn ensures safe reversing, prioritizing a secure working environment.

The trucks come standard with a foot-activated parking brake; in comparison to the traditional hand parking brake, the foot-activated design requires less effort to engage and disengage and ensures easier access and exit from the driver's compartment. A color display, providing all the key information at a glance, allows for easy and quick control over the truck's status.

Technology

- ✓ Compact dimensions for maneuvering in narrow spaces.
- ✓ Lithium-ion battery for increased truck availability.
- ✓ Maintenance-free battery.
- ✓ No hazardous gases emitted during charging.
- ✓ AC technology motors for maintenance-free operation.
- ✓ Powerful motors for enhanced performance.
- ✓ Lower energy consumption.
- ✓ Wet brakes ensuring low maintenance costs.



Ergonomics and driver's workplace

- ✓ Metal grid step and large handle for safe entry and exit from the driver's compartment.
- ✓ Electronic forward/reverse switch for fast and easy changes in driving direction.
- ✓ Rear handhold with horn for safe reversing.
- ✓ Foot-activated parking brake: less effort for engagement/disengagement, easier access to the driver's compartment.
- ✓ Color display for quick access to key truck information, ensuring easy control.

